



STUDENT LIFE & CULTURE ARCHIVES

NEWSLETTER FOR FACULTY AND STUDENTS

SPRING, 2014; No.1

Welcome to the inaugural edition of the Student Life and Culture (SLC) Archives's newsletter!

Endowed by alumnus Stewart Howe in 1989, the SLC Archives, under the auspices of the University of Illinois Archives, documents both national student experience through its world-renowned holdings on fraternities and sororities and all aspects of student life and culture at the University of Illinois. Its rich holdings address an unlimited array of topics, only a few of which are highlighted here.

Our hope is that through this newsletter, we will inspire you to explore the history of student life

more fully and take advantage of our extensive services and offerings!! In coming issues, look for information on our new oral history project, redesigned website, and speakers' series. Until next issue,



Ellen D. Swain

Ellen D. Swain
Archivist, Student Life and Culture Archives
eswain@illinois.edu

STUDENTS TO SERVICEMEN— WAR RECORDS OF WORLD WAR I

The University's War Records of World War I started in November, 1917 when Dean of Men Thomas Arkle Clark was appointed chairman of the University Committee on War Records. Unofficially, Dean Clark had been collecting material since July, 1917.



Dean Clark

See RS: 39/2/22

Letters went to parents of all Illini servicemen asking for available information, and notices were sent to all the camps and cantonments asking Illini to cooperate with the University in compiling war records. Approximately six thousand postal cards showing campus life and activities went out during the summer of 1918. Replies to these sporadic inquiries and additional Christmas greetings made up the bulk of the War Records. Dean Clark faithfully corresponded to each serviceman or parent who replied, and kept detailed records of servicemen's cards giving names, addresses, college, class, campus activities, fraterni-

ties and college honors, along with the rank, organization and location of the men. He retained all letters and photographs from servicemen and their families relating their wartime experiences.

The University of Illinois had 8,190 men and women in the service by the end of the War.

The War Records of World War I are now located at the SLC Archives as record series [41/2/17](#). Archivist Angela Jordan highlighted correspondence in a recent blog post. To see the full text of this post, visit

<http://archives.library.illinois.edu/blog/students-to-servicemen-1917-1919/>

and explore the new exhibit, *Students to Servicemen*, at the SLC Archives March-December, 2014.

SERVICES FOR INSTRUCTORS



<http://tinyurl.com/StudentArchives>



<http://tinyurl.com/SLCOralHistory>



<http://tinyurl.com/SLCHomecoming>



<http://tinyurl.com/SLCColdwar>



www.library.illinois.edu/village/primarysource/index.htm

The SLC Archives offers a number of services for faculty and instructors that can enrich any student's experience with primary sources.

- A tour of the facility and general orientation
- Class session at the Archives Research Center or in your classroom on conducting primary source research on student life
- The [Primary Source Village Tutorial](#) developed by SLC Archives staff to help students identify, find and analyze primary sources in the University Archives
- Online libguides that specifically address your class's topics and needs. Check out our general guide available at <http://uiuc.libguides.com/slc>. These guides can include as much or as little guidance as you feel is appropriate for your students.
- An exhibit on a specific topic covered by your class

We encourage you to schedule a consultation with Ellen Swain to discuss all the options. You can reach her at eswain@illinois.edu or at 333-7841.



<http://tinyurl.com/illioOnline>



<http://www.eui.illinois.edu/>



<http://idnc.library.illinois.edu/>



<http://archives.library.illinois.edu/>



<http://uihistories.library.illinois.edu/>

"WE ARE NOT TYPICAL OF EACH OTHER OR ANYTHING ELSE: 15 DECADES OF STUDENT LIFE AT THE UNIVERSITY OF ILLINOIS"

The images and text below are taken from a recent SLC Archives exhibit celebrating fifteen decades of remarkable students at the University of Illinois, and highlighting just a few of their accomplishments.

Fiteeen-year-old James Newton Matthews, '72, the first student to enroll at the Illinois Industrial University, had the soul of a poet in an age of iron and grit. Active in campus affairs, Matthews was a member of the Philomathean literary society and the Delta Tau Delta fraternity.

After graduating from the University in June 1872, he worked as a journalist for a time before

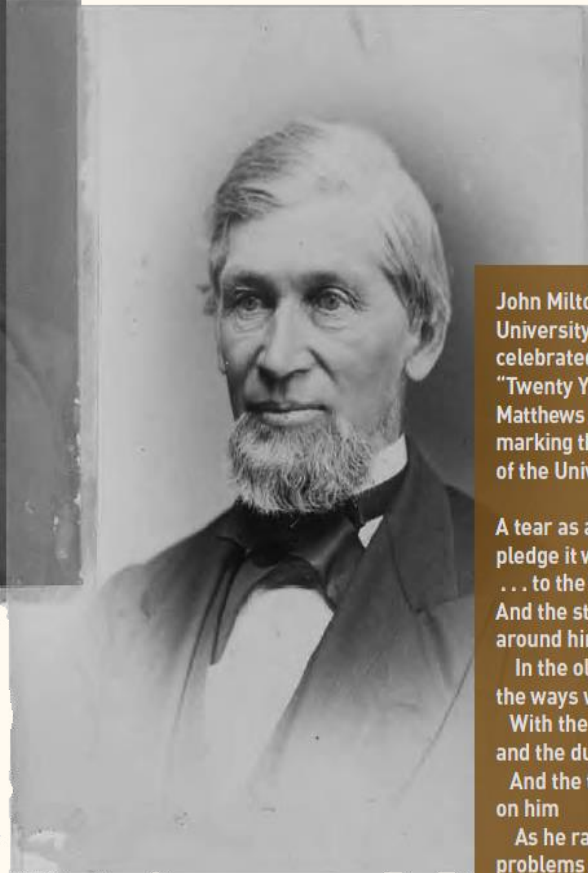
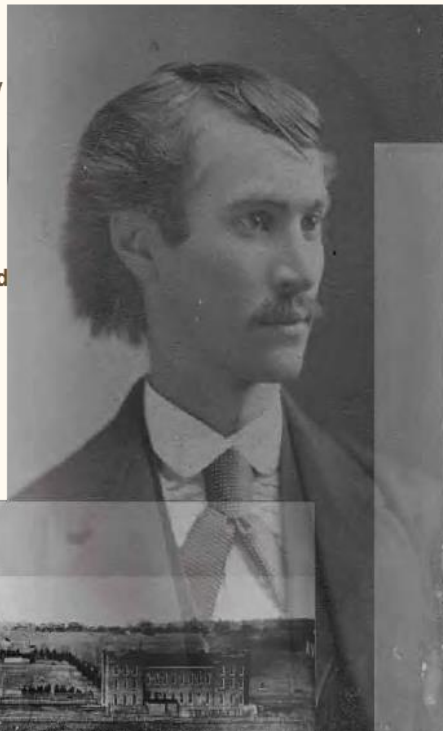
following in his father's footsteps and becoming a country doctor. He gained a measure of fame for his volumes of poetry and was christened the "Poet of the Prairies." He died in 1910 of "heart weakness."

The James Newton Matthews Scholarship Program was named in his honor.

This portable exhibit is available for display. For further information please contact

Ellen Swain at eswain@illinois.edu

James Newton Matthews, 1872. Matthews and two other Philomatheans secretly founded a chapter of Delta Tau Delta on campus, defying the wishes of Regent Gregory, who considered fraternities to be undemocratic. Students divided into "pro" and "anti" Delt factions.



John Milton Gregory, the University's first regent, was celebrated in a stanza of "Twenty Years After," which Matthews read at a ceremony marking the 20th anniversary of the University:

A tear as a toast—come
pledge it with me,
... to the glory of Gregory,
And the stalwart souls that
around him stood
In the old regime, when
the ways were dim
With the smoke of scorn
and the dust of doubt,
And the task of a Titan fell
on him
As he raveled the tangled
problems out.

RESOURCES FOR STUDENTS

If you have an assignment that requires that you use primary sources not available on the web, you have a number of choices. Each issue of our newsletter will highlight a few of those resources created to help you use the materials in the archives. If you have not looked at the resources available on our website you are missing some materials that could make your work easier!

Our first featured source is **The Timeline** spanning the entire history of the University of Illinois, from 1867 to the present day. It is extremely helpful when looking for a topic on University history. See:

<http://archives.library.illinois.edu/slc/researchguides/timeline/>



In 1992 Latino/a students and supporters occupied the Office of Minority Student Affairs and the Administration Building to demand reforms and resources. (Timeline, 1990-1999)

UPCOMING EVENTS

“Students to Servicemen—War Records of World War I”
- Exhibit—SLC Archives, March—Dec. 2014

National Archives Conference for Fraternities and Sororities, hosted by the SLC Archives, June 12-14, 2014

HATS OFF: BEANIES OF THE BIG TEN

STUDENT LIFE AND CULTURE ARCHIVES

Archives Research Center
Horticulture Field Laboratory
1707 S. Orchard St.
Urbana, IL 61801

Tel: 217-333-7841
Fax: 217-244-4300
E-mail: eswain@illinois.edu



*University of Illinois,
Urbana-Champaign*

We're on the Web
archives.library.illinois.edu/slc



A practice that never fails to fascinate current undergraduates is the freshman beanie ritual. As early as 1906, Illinois freshmen donned the green cap while carrying out their daily activities. This practice could be considered hazing, of course, but Dean of Men Thomas Arkle Clark cited its positive attributes in his guide for freshman men: “The custom of wearing the cap is a good one which all freshmen should follow; it helps to differentiate classes, it aids the freshmen themselves in recognizing their classmates, and it gives a certain picturesque to the crowds of students as they

pass back and forth between buildings” (*Facts for Freshman*, 1914). At last, in late spring, an elaborate cap burning ceremony marked these brave souls’ passage into their sophomore year!

Although they took different forms and names, freshman “beanies” were a familiar sight on campuses across the country in the twentieth century. In 2013, archivists in the CIC collaborated on an online historical exhibit that highlights this retired practice. Be sure to click on each of the beanies at the top of the page to explore each institution’s story:

Hats Off: Beanies of the Big Ten:

<http://library.osu.edu/projects/beanies/>



STUDENT LIFE AND CULTURE ARCHIVES

Archives Research Center
Horticulture Field Laboratory
1707 S. Orchard St.
Urbana, IL. 61801

Tel: 217-333-7841

Fax: 217-244-4300

E-mail: eswain@illinois.edu



*University of Illinois,
Urbana-Champaign*

We're on the Web

archives.library.illinois.edu/slc



Student Life and Culture
Archives was founded in 1989
with monies from the Stewart
Howe Foundation



**Getting to the SLC Archives at the Archives Research Center
(Hort Field Laboratory)**

**If you plan to visit us, you can reach us from campus on either
the Teal or Bronze lines. For more information see [http://
www.cumtd.com/maps-and-schedules](http://www.cumtd.com/maps-and-schedules).**

**If you prefer to drive there is metered parking available but
do bring quarters!**