

Editorial Page

Cover up?

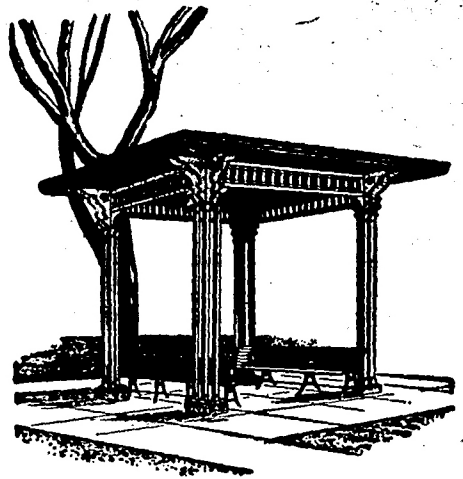
When The Daily Illini discovered Halfway House leaning against a chicken coop in south campus last September, there was every indication that the familiar little bus shelter was destined to lean there indefinitely.

But friends of Halfway House, reminded of the longtime landmark by Daily Illini stories, set up a cry for its return to campus. Letters of support came to this newspaper from alumni as far away as California, and the University bureaucracy began to move.

From the very first, The Daily Illini has not expressed an opinion about WHERE Halfway House should be located. Our campaign was to return it to the campus. We assumed that the proper University officials and committees could determine a suitable place for it.

Now we understand, however, that the return of Halfway House may not be as simple as that. The Daily Illini has learned on good authority that there is a very good possibility that Halfway House will be "hidden" upon its return. According to our source, the bus shelter may be located in an obscure corner of the east campus, where the majority of students, faculty and visitors would rarely see it.

Before it was removed in 1960 so that Green St. could be widened, Halfway House was in front of the Illini Union — at the "front door" to the campus. We understand that its return to a nearby location has



been objected to by a University dean ("Don't make me look at it out MY window," he is reported to have said), and that other locations have proven no more popular.

When The Daily Illini was requested, a month ago, to make a presentation on Halfway House before the Campus Planning Committee, we said that our primary interest was in seeing the landmark returned to the campus in time for this year's seniors to sit in its shade before graduating.

We now realize that this is not enough. We feel it is important that Halfway House be restored to a central location where it can be seen and used. Such locations might include (a) between the Library and Gregory Hall; (b) between Altgeld Hall and the Administration Building on Wright St.; or (c) in front of the Natural History Building.

We urge the University not to hide one of its handful of legitimate landmarks.